

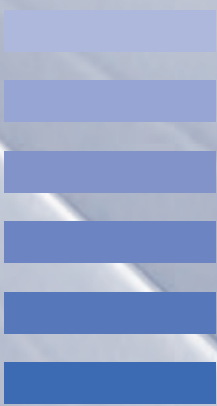


The Ultimate Roller
Door System



Remote Control Roller Garage Doors

Stylish security that works for you



www.aluroll.co.uk





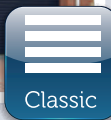
Certified Secure

The Aluroll Elite roller garage door has been tested to LPS 1175 level 1 for security and has been awarded the Police Approved, Secured by Design certificate.

Why Choose An Aluroll Roller Garage Door?

Compared to up and over or sectional garage doors, the Aluroll roller garage door is a breath of fresh air! The compact vertical rolling action of the door means no ugly tracks or arms taking up valuable storage or parking space inside or outside the garage. Just effortless remote control operation and stunning good looks - that's why!

Choice - the renowned Aluroll range



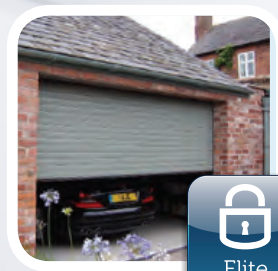
Classic

The crisp, clean profile of the **Aluroll Classic**



Compact

The space saving profile of the **Aluroll Compact**



Elite

The Police Approved security of the **Aluroll Elite**



The Ultimate Roller Door System

At Aluroll we make remote control roller garage doors. Our approach is simple:



No Compromise On Quality



The Aluroll "Peace of Mind" 2, 5 & 10 year Guarantees. See Page 8 for full details



British Quality Made to...

You won't find a better qualified garage door manufacturer than Aluroll. We manufacture under an ISO 9001 UKAS audited quality system, Comply with ALL CE regulations and are LPCB (Loss Prevention Certification Board) accredited. Aluroll is a member of all major trade associations and a key contributor to industry quality and safety standards.



...German Standards

Our standards are set at the highest level and we only use the very best materials in Aluroll garage doors. We source all components from specialist partner companies selected for their "German Standard" engineering ability and international reputation for durable, best of breed products.



ALUGREEN

At Aluroll the electricity meters run backwards! Our manufacturing plant in Oswestry uses technology that combines ground source heat pumps and solar panels to generate all the power we need to make our doors. The plant is so efficient we send electricity back into the grid - ALUGREEN is the name we've given to the way we make doors!



Stylish security that works for you

Full Roll Box For A Very Neat Installation

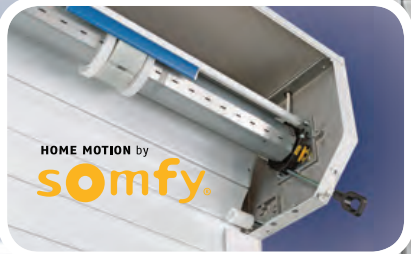
The inside face of the door is very tidy (the Classic/Elite door is shown as the main image with the Compact door inset). A full box is supplied as standard, which fully encloses the door roll and is finished in white or brown with the option of matching to solid coloured door curtains.

The image shows the door with part of the roll box cut away to expose the door barrel.



Safety Brake On Every Classic & Elite Door

In the unlikely event that the motor drive shears, an automatic safety brake instantly stops the door from dropping - safety first!



Space Saving Roll, Vertical Travel

The door travels vertically into a compact roll for maximum space inside and out - no lost storage space with Aluroll!



Robust Anti-Lift Locking Straps

Secure closure is maintained with high grade, German engineered spring loaded lock straps that prevent the curtain from being lifted.



Manual Override

If the power fails, a simple hand crank allows you to wind the door up or down to keep you secure and maintain access.



Durable Aluminium Slats

Sourced for high quality from Germany, the curved and ribbed profile of each slat (77mm deep for the Classic/Elite and 55mm deep for the Compact) is formed from aluminium filled with CFC free foam for a lightweight, strong and corrosion resistant door curtain.



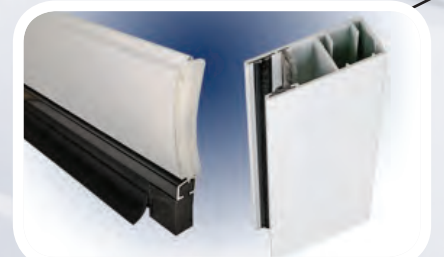
The Compact

The Compact door uses a smaller slat profile - 55mm and consequently requires a smaller roll to house the door when open. This makes it ideal when headroom is limited inside the garage. See over for more details.



Effective Weather Strip

The skirted profile of the bottom edge weatherstrip channels rain run-off away from the door to minimise water ingress into the garage space.



Strong Door Guides & Slats

Extruded aluminium guides in white or brown with a draught brush and anti-rub glide-brushes ensure the door curtain is secure and operation is smooth. The extruded bottom weather strip channel adds further rigidity.





The Ultimate Roller Door System



Wired or wireless safety edge sensor

Aluroll's control system is proven for long-term reliability. Our standard solution uses a wired safety edge that automatically halts the door on detecting an obstruction - peace-of-mind safety that is fully compliant with European Safety Directives. A wireless version is also available as an option.



Alternative controls

Operation without a handset from outside can be added with a simple electronic keypad, or key switch.



Style, Security & Reliability

The Drive & Control Centre

At the heart of every Aluroll roller garage door is the remote control drive system. Safety always comes first and all doors are CE marked and fully compliant with European Safety Legislation. The control unit acts as a command centre that:

- Activates the ultra-reliable Somfy motor with a 5 year warranty by built in push button or signal from a remote control
- Monitors safety systems to stop and reverse the door if an obstruction is detected
- Turns on the courtesy light with a time delay to guide your way
- Provides a holiday Lock that prevents operation of the system until reset upon return from holiday
- Allows an external light to be controlled via a wireless receiver option or hard wired to the light. Gates can also be controlled with a wireless receiver
- Has a 98dB alarm as an optional feature that is activated if an attempt is made to force up the door curtain. The alarm unit is also sensitive to vibration



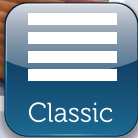
Somfy Powered

Aluroll doors are powered by the industries' best motors from Somfy, one of the worlds most renowned manufacturers. A five year conditional warranty covers the motor.



Stylish security that works for you

Which door is right for you?



Classic

The Aluroll Classic is our biggest selling garage door. It has 77mm deep slats and coils into a 250/300/360mm box dependent on door height with 70mm (doors up to 3m wide) or 90mm wide side guides. Remote control is standard with a wired safety edge obstruction detector for superb reliability.



Compact

The Aluroll Compact is perfect when space is tight. Its 55mm deep slats coil into just a 205/250mm box dependent on door height with 68mm wide side guides. All the benefits of a roller garage door in a super compact design. Remote control is standard with a wired safety edge obstruction detector for superb reliability.



Elite

The Aluroll Elite is a Police Approved, Secured by Design version of the Aluroll Classic. It is tested and approved to the Loss Prevention & Certification Board (LPCB) to British Standard LPS 1175 Level 1 for Burglary Resistance. Want to know more? Visit www.redbooklive.com to see what it means to hold LPCB approval. Doors have 150mm side guides as part of the specification that results in the security rating.

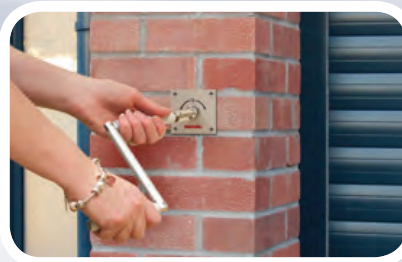


Accessories & Options



Vision Slats

A simple but effective way of allowing light into the garage space. Polycarbonate infills keep the weather at bay. A maximum of three slats ensures the strength and integrity of the door is maintained.



External Override

If you have no other access to your garage an external override allows manual operation of the garage door in the event of a power failure via a lockable cover.



Alarm Module

A 98dB alarm can be added that activates if an attempt is made to force the door by levering up the bottom slat of the door.



Control Options

There are a number of ways to add alternative ways of opening your door or extra capability.

- 1 Wireless digital key pad - punch in a code to open the door
- 2 Key switch - turn the key (three supplied) to operate the door without the need for a remote control
- 3 Control lights or remote control gates with a receiver/control unit from a multi-channel transmitter
- 4 Add a simple wireless wall switch to operate your door from inside your home
- 5 Add extra transmitters with multiple channels to control compatible devices and to keep family members happy too!



Colour Matched Box & Guides

Doors are supplied with white or brown box and guides as standard. Solid coloured doors - red, blue, etc., are available painted to match as an option.

At Aluroll we make remote control roller garage doors.
Every door is beautifully finished:

Colours, options and fitting



The Ultimate Roller Door System

Colours

Classic & Elite Colours Compact colours marked *

* Steel Blue (RAL 5011)	Painted Teak
* Moss Green (RAL 6005)	Painted Oak
* Fir Green (RAL 6009)	Painted Rosewood
Sage Green (RAL 6021)	Laminate Irish Oak
* Red (RAL 3028)	* Laminate Mahogany
* Brown (RAL 8019)	* Laminate Roswood
* Anthracite (RAL 7016)	* Laminate Golden Oak

Some notes on colour

If you would like an alternate colour Aluroll is able to powder coat foam filled laths to a specific RAL colour to match building colour schemes.

Note: Woodgrain Laminate finish options are subject to a surcharge.

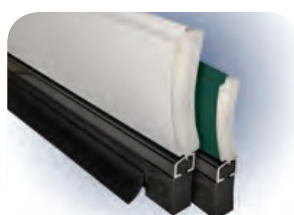
Please be aware that, as the special finish appears on one side only, woodgrain laminate doors are only suitable for internal face fixing.

Colours shown here are a guide only due to variances in colour printing.

If you are unsure of your colour choice please request a sample. Colour references quoted are the nearest standard RAL or BS reference to the colours used and may not match perfectly.

There may be slight differences in shade and sheen on different parts of the door are coloured using different processes, this will however, be minimal.

* Grey (RAL 7038)
Natural (RAL 9006)
* Black (RAL 9005)
* Beige (BS 08B17)
* White (RAL 9010)



The image shows the relative size of the Classic and Elite curtain lath compared to Compact lath (right).

Where will my door fit?

View from inside the garage

View from outside the garage

Internal Face Fix
Fitting to the inside face of the garage opening, this is the most common location and allows the maximum clear drive through width between the opening uprights and the best security.

View from inside the garage

View from outside the garage

Reveal Fix
Fitting under the opening lintel and between the opening uprights for when face fixing is not possible. It requires good reveal headroom. The Aluroll Compact is ideal for this type of installation.

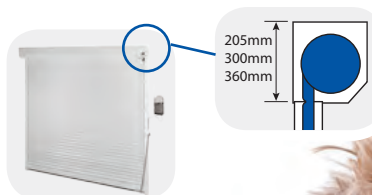
View from inside the garage

View from outside the garage

External face Fix
When headroom does not permit internal fixing doors can be fixed to the external face. A full roll box is required. The concave face of the door curtain slats face outwards.

How much space?

The fixing positions of the door shown above give a good indication of just how versatile and compact Aluroll roller garage doors are. The headroom needed to fit a door ranges from as little as 205mm for the Aluroll Compact to 360mm for the largest Aluroll Classic and Elite doors, with intermediate sizes of 250mm or 300mm of headroom dependent on size.



An external face fixed Classic garage door.

Stylish security that works for you



Guarantee

Aluroll Roller Garage Doors Classic, Elite and Compact are protected by our manufacturers warranty. The key elements of the warranty are listed here. For detailed warranty conditions please see www.aluroll.co.uk. The following apply to all Aluroll doors:

2 Years electrical.

5 Years tubular motors.

10 years paint finish.



10 Years corrosion free on door panels for domestic / residential / Industrial / commercial use excludes paint surface fading or rubbing.

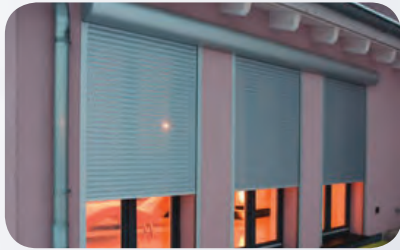
Aluroll strongly recommends that all Aluroll products be serviced by an authorised Aluroll Distributor every 12 months to ensure longevity of the products' life. Failure to do this may result in any warranty being invalid.

Garage doors should be inspected upon installation and viewed in natural daylight (not direct sunlight) from a standard distance of three metres to view their overall appearance. From this distance the door panel should appear free from visible marks or distortions, stains, blemishes, indentations or scuffs. Only marks visible from a distance of three metres will be considered under warranty. Over time there may be marking to the concave face of the door curtain (normally the inside face of the door, unless it is externally fitted), this is a characteristic of the doors rolling operation and does not affect the performance of the door and is not part of the warranty.



The Ultimate Roller Door System

Other Aluroll Products



AlumRoll Security Shutters & Grilles

Aluroll manufactures a range of aluminium security shutters for domestic and commercial applications. The Aluroll range of shutters is both a deterrent and barrier to crime. The compact designs are architecturally sympathetic with attractive finishes



and are available in 'solid' and 'vision' versions to meet the demands of many local authorities for see-through protection. Ventilation options ensure adequate airflow in confined space applications and LPCB assessed versions provide certified security levels.



SteelRoll Security Shutters & Fire Shutters

The SteelRoll range of fully certified steel fire and security shutters is versatile and offers the ultimate in strength and security. Four hour fire rated designs and single or three phase powered automated versions with a range of access controls deliver reliable performance.

Aluroll reserves the right to alter specifications to design and manufacture without notification. All specifications are correct at time of publication, errors and omissions excepted. Colours shown are as a guide only and limited by the printing process and the process used in their application.

All Aluroll doors are installed by a network of fully trained and approved installers:



www.aluroll.co.uk



Stylish security that works for you

April 2014 Issue 1